



Nutfield Road, Leyton, E15 2DG

Offers In Excess Of £575,000



**** THREE BEDROOM TERRACED HOME WITH HUGE POTENTIAL CLOSE TO LEYTON STATION ****

*** VIRTUAL TOUR ONLINE ***

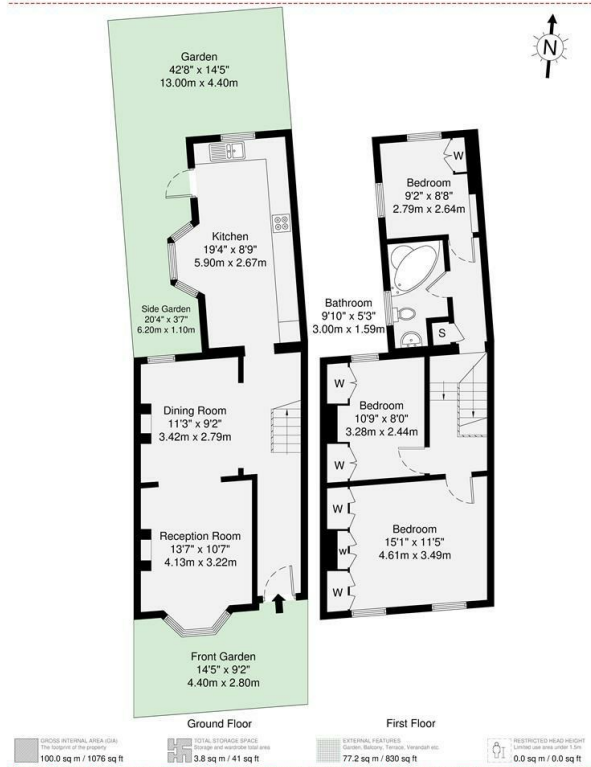
OC Homes is delighted to present to the sales market, this three-bedroom terraced house on a lovely tree-lined street off High Road Leyton, E15. The property requires some modernisation and boasts lots of scope for development to turn into a lovely family home, moments from the tube, in a sought-after location.

Accommodation comprises; Ground Floor - front garden, entrance hallway, reception room, kitchen / diner, and access to a good size rear garden with side return. The first floor comprises three bedrooms, a three-piece bathroom suite, and access to a sizeable loft that can be converted to a fourth bedroom with an en suite bathroom (STPP). This property is offered chain-free and is sure to attract a lot of interest. To arrange a viewing please call the OC Homes sales team now.

- CHARMING 3 BED TERRACE
- SCOPE FOR IMPROVEMENT
- SOUGHT AFTER LOCATION
- EXCELLENT TRANSPORT LINKS
- IDEAL RENOVATION PROJECT
- CHAIN FREE

Viewing

Please contact our OC Homes Leyton Office on 02085561212 if you wish to arrange a viewing appointment for this property or require further information.



Energy Efficiency Rating		Current	Potential
Very energy efficient - lower running costs			
(92 plus) A			
(81-91) B			
(69-80) C			
(55-68) D			
(38-54) E			
(21-38) F			
(1-20) G			
Not energy efficient - higher running costs			
England & Wales		69	80
EU Directive 2002/91/EC			

Environmental Impact (CO ₂) Rating		Current	Potential
Very environmentally friendly - lower CO ₂ emissions			
(92 plus) A			
(81-91) B			
(69-80) C			
(55-68) D			
(38-54) E			
(21-38) F			
(1-20) G			
Not environmentally friendly - higher CO ₂ emissions			
England & Wales		65	80
EU Directive 2002/91/EC			



These particulars, whilst believed to be accurate are set out as a general outline only for guidance and do not constitute any part of an offer or contract. Intending purchasers should not rely on them as statements of representation of fact, but must satisfy themselves by inspection or otherwise as to their accuracy. No person in this firm's employment has the authority to make or give any representation or warranty in respect of the property.